

ZoneBarrier

Model 91292 protects T-1 interfaces against lightning induced surges and switching transients.



- Dual connection capability – use terminal strip or RJ48C, in or out
- Wall, DIN rail or 19" rack mountable
- Expandable, modular protection for one to an unlimited number of ports
- Three stage series hybrid protection
- Tested to IEC 61000-4-5 and CCITT K17
- 10 year product warranty



ZoneBarrier model 91292 provides the ultimate in connection flexibility. Both input (unprotected) and output (protected) are equipped with RJ48C sockets and pluggable terminal strips. Connect the input with an RJ and the output with a terminal strip, or vice versa, or use RJ48 in and out or hardwire in and out.

The ZoneBarrier Series is a uniquely modular protection system for telecommunications equipment. These versatile units provide an effective barrier between uncontrolled transient environments and your valuable electronic systems protecting you from costly system down time and equipment failure.

The sophisticated hybrid circuitry employed by the ZoneBarrier Series protects your equipment without impeding normal operation. Depending on the model, ZoneBarrier protection components are comprised of a combination of high energy Gas Discharge Tubes with ultra fast diodes

and Silicon Avalanche Diodes. These combinations of high quality surge protection components give the ZoneBarrier Series its characteristic low let-through voltage and high, 10kA, surge current capacity providing excellent protection.

The ZoneBarrier Series offers a flexible surge protection solution that is capable of growing with your requirements. A ZoneBarrier module can be used as a stand-alone device or as a building block in a surge protection solution as simple or as complex as your requirements, now and in the future.

One simple manual operation clamps modules securely onto a DIN rail, an action that also automatically provides the essential high-integrity ground connection. Where a number of ZoneBarrier Series modules are mounted on one rail, any that are incorrectly mounted (and therefore not securely grounded)

are very obvious and can easily be remounted correctly. The ZoneBarrier Series also has two mounting feet at either end of the unit, enabling mounting to a flat surface such as a cabinet or wall.

ZoneBarrier devices are tested to IEC 61000-4-5 and CCITT K17. Industrial Ethernet compatible versions are also UL Certified Cat.5 and are UL 497B Listed. ZoneBarriers come complete with a full 10 year product warranty.

Specification

All figures typical at 77°F (25°C) unless otherwise stated

Maximum load current

0.5 Amps

Maximum surge current

10kA @ 8/20µs impulse per line

Maximum leakage current

5µA at working voltage

Maximum in line resistance

4.5 Ω

Bandwidth

50 MHz

Ambient temperature limits

-40°F to +185°F (working)

-40°C to +85°C (working)

Humidity

95% RH (non-condensing)

Casing

Molded plastic

Weight

2.8oz (0.08Kg)

Dimensions

See figure 1

EMC compliance

BS EN 60950: 1992

BS EN 61000-6-2: 1999

Installation

All ZoneBarrier modules are installed in-line and are identified with "Protected" and "Unprotected" for fail-safe installation.

DIN rail mounting (figure 2)

ZoneBarrier modules can be mounted on any standard T-section DIN rail or on the optional 19" DIN rail assembly. To attach the ZoneBarrier module to the DIN rail, simply locate the DIN rail foot of the module over on edge of the DIN rail and then securely push the ZoneBarrier onto the DIN rail. *Note the DIN rail must be properly grounded.*

Stand-alone installation (figure 3)

To install a ZoneBarrier module as a stand-alone protector, attach an ground lead to the supplied ring terminal and secure this with the self tapping screw provided to the base of the unit. Using screws (or bolts) mount the module on any flat surface.

Note: In accordance with our policy of continuous improvement, we reserve the right to change the product's specification without notice.

Model	Type	Lines	Working voltage	Let-through voltage	Maximum continuous operating voltage	Connectors
91292	3 stage hybrid	4	(V)	(V)	(V)	RJ48C & Pluggable hardwired

Connection Options

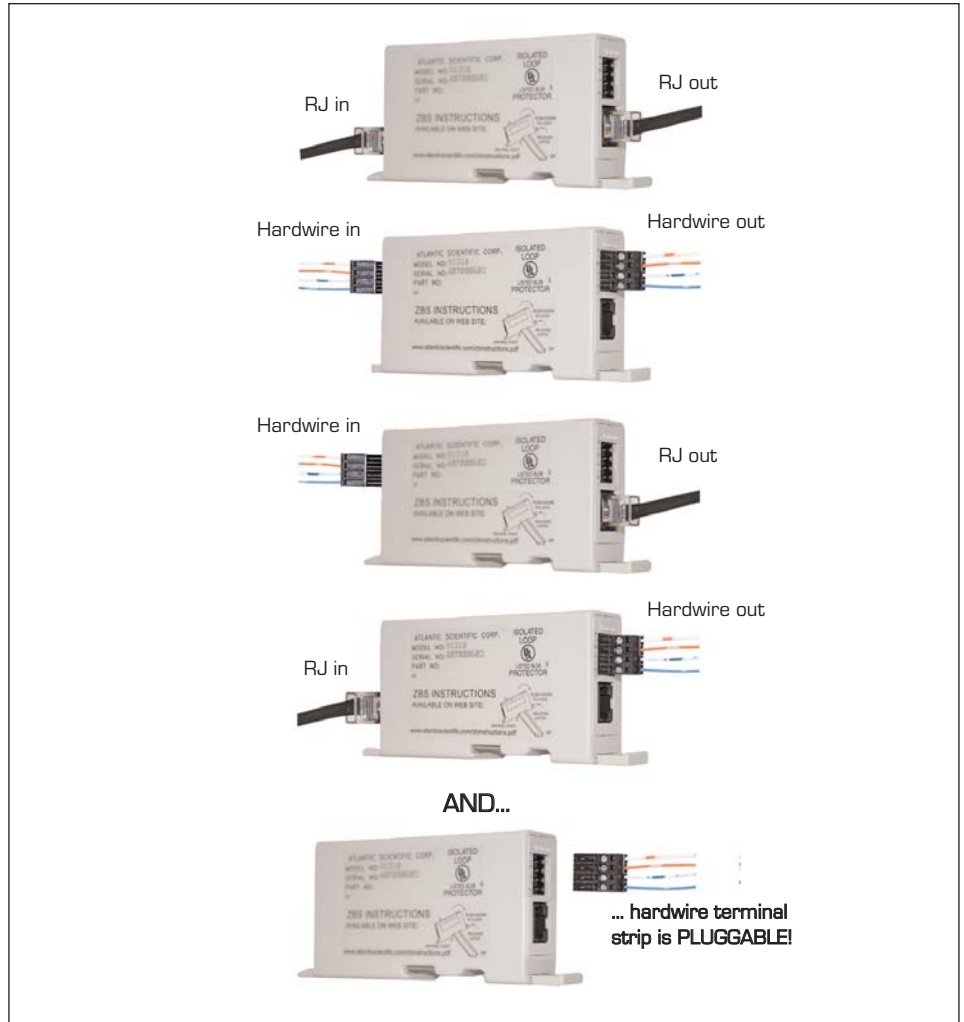


Figure 1 Dimensions

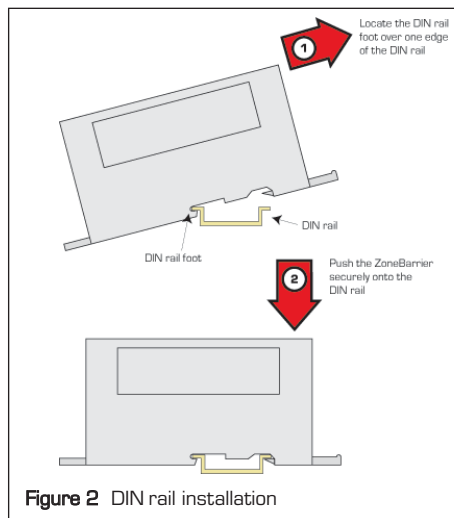
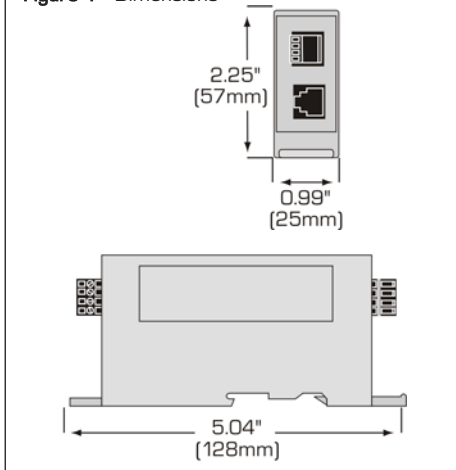


Figure 2 DIN rail installation

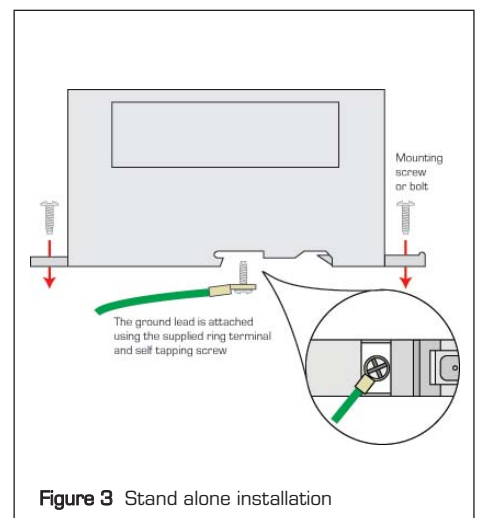


Figure 3 Stand alone installation